

Outdoor Screenings Winter 2011

NEW RELEASES

ALPHA & OMEGA

Family/Animated, Rated PG, 88 Minutes

Featuring voices of: Justin Long, Hayden Panettiere, Dennis Hopper

Wolves Kate and Humphrey have known each other since puppyhood - Kate is the energetic Alpha daughter of the pack leader and Humphrey is the good humoured Omega. The social structure forces Kate to accept an arranged marriage with a member of another pack to unite the wolves for peace. But Kate and Humphrey are captured by park rangers and sent cross-country as part of a wolf repopulation project. Kate is determined to return home and Humphrey offers to help. However, as this disparate pair struggle through the dangers to get home, a growing mutual appreciation of their talents and then a deeper love threatens to disastrously complicate everything if they make it back. **Available from June 7.**

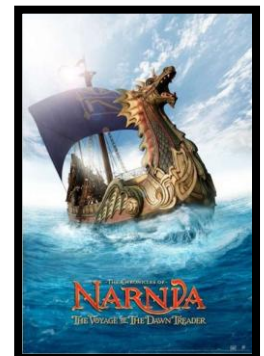


CHRONICLES OF NARNIA: THE VOYAGE OF THE DAWN TREADER

Family/Adventure, Rated PG, 112 Minutes

Starring: Skandar Keynes, Georgie Henley, Will Poulter, Ben Barnes

Edmund and Lucy Pevensie and their young irritating, know-it-all cousin Eustace find themselves swallowed into a painting on their bedroom wall and transported to Narnia onto the ship The Dawn Treader with their friend King Caspian, and his warrior mouse Reepicheep and colourful crew. In order to save Narnia, Caspian's mission is to retrieve the seven swords belonging to the Lords of Telmar, which were given to them by the Great Lion Aslan. The treacherous journey takes them far across the ocean to mysterious islands where evil lurks, but their friend and protector Aslan is always close at hand. **Available from May 30.**



GULLIVER'S TRAVELS

Comedy, Rated PG, 85 Minutes

Starring: Jack Black, Emily Blunt, Billy Connolly, Jason Segel

Newspaper mail room clerk Lemuel Gulliver pretends to be an aspiring travel writer, and is given a trial assignment to the Bermuda Triangle. Lemuel ends up on the island of Lilliput, where he towers over its tiny citizens and makes a fool of himself, enjoying his newfound position at the centre of attention, playing cupid to Princess Mary, daughter of King Theodore, and Horatio. Gulliver's position is enhanced even further when he leads his new friends in a daring battle against their long-time enemies. But when Gulliver loses it all and puts the Lilliputians in peril, he must find a way to undo the damage. **Available from July 4.**



HARRY POTTER AND THE DEATHLY HALLOWS PART ONE

Adventure, Rated M, 146 Minutes

Starring: Daniel Radcliffe, Emma Watson, Rupert Grint

Harry, Ron and Hermione set out on their perilous mission to track down and destroy the Horcruxes - the keys to Voldemort's immortality. The long-feared war has begun and Voldemort's Death Eaters seize control of the Ministry of Magic and even Hogwarts, terrorising and arresting anyone who might oppose them. The Chosen One has become the hunted one as Voldemort's followers look for Harry with orders to bring him to the Dark Lord -- alive. Harry's only hope is to find the Horcruxes before Voldemort finds him. But as he searches for clues, he uncovers an old and almost forgotten tale; the legend of the Deathly Hallows. And if the legend turns out to be true, it could give Voldemort the ultimate power he seeks. **Available from June 15.**



RAMONA AND BEEZUS

Family/Comedy, Rated G, 103 Minutes

Starring: Joey King, Selena Gomez, John Corbett, Ginnifer Goodwin

Young third grader Ramona has a vivid imagination, boundless energy, and accident-prone antics that keep everyone she meets on their toes. But her irrepressible sense of fun, adventure and mischief come in handy when she puts her mind to helping save her family's home before it's too late. Along the way, Ramona must deal with her over-achieving older sister Beezus, and the on-again, off-again romance between her Aunt Bea and Bea's former beau, Hobart. **Available from May 2.**



TANGLED

Animated/Family, Rated PG, 100 Minutes

Featuring voices of: Mandy Moore, Zachary Levi, Donna Murphy

With his stolen bounty in his satchel, charming bandit Flynn Rider climbs up a tall, mysterious tower to hide out. But he is taken hostage by Rapunzel, a beautiful girl with 70 feet of magical, golden hair, whose controlling mother has kept her tower-bound for many years. Rapunzel strikes a deal with the handsome thief, who reluctantly agrees to take her into the Kingdom on her 18th birthday to watch the floating lanterns released into the sky. Every year on the same day, the lanterns are released by the King and Queen, as a symbol of hope to find their kidnapped Princess daughter. **Available from July 11.**



TRON: LEGACY

Science-Fiction/Action, Rated PG, 125 Minutes

Starring: Garrett Hedlund, Jeff Bridges, Olivia Wilde

Sam Flynn, the tech-savvy 27-year-old son of missing businessman and software designer Kevin Flynn, looks into his father's disappearance and finds himself pulled into the same world of fierce programs and gladiatorial games where it turns out his father has been living for 20 years. Along with Kevin's loyal confidant, Quorra, father and son embark on a life-and-death journey across a visually-stunning cyber universe that has become far more advanced and exceedingly dangerous. **Available from June 20.**



RECENT RELEASES FROM OUR GREAT BACK CATALOGUE AVAILABLE NOW

ALICE IN WONDERLAND

Family, Rated PG, 108 Minutes

Starring: Mia Wasikowska, Johnny Depp, Helena Bonham Carter

For 19-year-old Alice Kingsley, life is about to take a turn for the unexpected. When Hamish, the worthy but dull son of Lord and Lady Ascot, proposes marriage, Alice flees, heading off after a waistcoated rabbit and falls down the rabbit hole, and Alice finds herself in the fantastical world of Underland. There, she meets a swashbuckling Dormouse, the aptly named Mad Hatter, an ever-grinning Cheshire Cat, the hookah-smoking caterpillar Absalom, a creepy White Queen and her spiteful older sister, the Red Queen - ruler of Underland whose reign of terror Alice is destined to end.



BRAN NUE DAE

Comedy/Musical, Rated PG, 85 Minutes

Starring: Rocky McKenzie, Geoffrey Rush, Ernie Dingo, Jessica Mauboy

In the summer of 1967, young Willie is filled with the life in Broome - fishing, hanging out with his mates and hoping to get a date with the lovely Rosie. However his mother returns him to the religious mission in Perth for further schooling on the path to be a priest. After being punished for an act of youthful rebellion by Father Benedictus, he runs away from the mission and heads back to Broome, meeting a hippy couple and Uncle Tadpole along the way. When Father Benedictus finally catches up with the runaway back home, all kinds of family secrets tumble out on the splendid nearby beach.

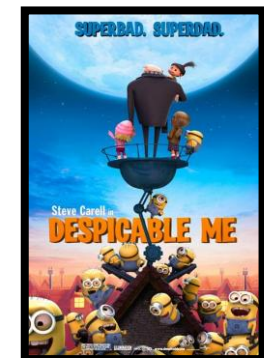


DESPICABLE ME

Animated/Children, Rated PG, 95 Minutes

Featuring voices of: Steve Carell, Miranda Cosgrove

Surrounded by an army of tireless, little yellow minions, Gru is planning the biggest heist in the history of the world -- he is going to steal the moon. Gru delights in all things wicked, so armed with his arsenal of shrink rays, freeze rays and battle-ready vehicles for, he vanquishes all who stand in his way. Until the day he encounters the irresistible will of three little orphan sisters; Margo, Edith and Agnes, who look at him and see something that no one else has ever seen: a potential Dad.



LEGEND OF THE GUARDIANS

Family/Animated, Rated PG, 100 Minutes

Featuring voices of: Jim Sturgess, Ryan Kwanten, Geoffrey Rush

Young owl Soren is enthralled by his father's epic stories of the Guardians of Ga'Hoole, a mythic band of winged warriors who had fought a great battle to save all of owlkind from the evil Pure Ones. While Soren dreams of someday joining his heroes, his older brother Kludd scoffs at the notion. But Kludd's jealousy has terrible consequences - causing both owlets to fall from their treetop home and right into the talons of the Pure Ones. Now it is up to Soren to make a daring escape with the help of other brave young owls. Together they soar across the sea and through the mist to find the Great Tree, home of the legendary Guardians - Soren's only hope of defeating the Pure Ones and saving the owl kingdoms.



MAMMA MIA!

Comedy/Musical, Rated PG, 103 Minutes

Starring: Meryl Streep, Amanda Seyfried, Pierce Brosnan, Colin Firth

Donna runs a tiny B&B on a small Greek island with her 20-year-old daughter Sophie - the island on which she had three romantic encounters 20 years earlier, none of which ended up with marriage, but one of which ended up with Sophie. When Sophie finds her mum's tell-all diary of those days, she finds the details of three men: Sam Carmichael, Harry Bright and Bill. Desperate to find out which is her father, she fakes invitations from her mother to her looming island wedding to Sky. When the three men arrive, the dynamics of the relationships are radically changed, as are many lives. **Due to legal restrictions, the Singalong version of Mamma Mia! is not available for outdoor screenings.**



MARMADUKE

Family, Rated PG, 88 Minutes

Starring: Lee Pace, Judy Greer. Featuring voices of: Owen Wilson, Kiefer Sutherland

A suburban family moves from Kansas to California for a new job, taking Marmaduke, their large and lovable Great Dane, who has a tendency to wreak havoc in his own oblivious way. Trouble begins when he intrudes on the turf of local Alpha Male, Bosco, whose moll is the collie, Jezebel, for whom Marmaduke develops an instant crush, while Mazie pines for him and acts as his guardian in this new world.



NIGHT AT THE MUSEUM: BATTLE OF THE SMITHSONIAN

Family/Comedy, Rated PG, 105 Minutes

Starring: Ben Stiller, Amy Adams, Owen Wilson

Ex-security guard from the Museum of Natural History, Larry Daley, is now a businessman in charge of his own company, selling his own inventions. When he gets a distress call from Jedediah, he infiltrates the Smithsonian Institute in order to rescue his old friends who have been shipped to the museum, destined to be put in deep storage. With the help of Amelia Earheart and a host of new historical figures brought to life, they fight Kah Mun Rah, an ancient-Egyptian pharaoh wanting to take over the world.



TOY STORY 3

Animated/Family, Rated G, 108 Minutes

Featuring voices of: Tom Hanks, Tim Allen, Ned Beatty, Michael Keaton

As Andy prepares to depart for college, Buzz, Woody and the rest of his loyal toys are troubled about their uncertain future: will they be discarded into the dumpster or put in the attic? In fact, the toys land up in a room full of untamed tots at the Sundale Daycare Centre who can't wait to break in the new toys - in a bad way. To make things worse, the Centre's toys are under the oppressive eye of Lotso, the toy bear that smells of strawberries but acts like a prison commandant. It's pandemonium as Andy's toys try to stay together, ensuring "no toy gets left behind." In the midst of the mayhem, Barbie comes face to plastic face with Ken.



UP

Animated/Family, Rated PG, 96 Minutes

Featuring voices of: Ed Asner, Jordan Nagai, Christopher Plummer

Childhood sweethearts Carl and Ellie never quite manage to make their dream of a house at Paradise Falls in South America come true. After Ellie's death, Carl, now 78 and retired from his balloon selling job, is being bullied by developers to sell the home they built. Adamant not to sell but forced to leave, he ties thousands of balloons to the roof, lifting the house into the air, and sets off for South America to fulfill that old promise. Carl's plan is challenged with the discovery of an accidental stowaway, young adventure seeker Russell, but even bigger surprises are in store for the duo, from extreme weather and treacherous terrain - to the strange and dangerous inhabitants of a lost world.



WALL-E

Animated/Family, Rated G, 98 Minutes

Featuring voices of: Ben Burtt, Elissa Knight

In 2700, after hundreds of years doing what he was built for, WALL-E, short for Waste Allocation Load Lifter - Earth class, discovers a new purpose in life (besides collecting knick-knacks) when a sleek life-seeking robot, EVE, is delivered to Earth by a spaceship, dispatched by the automated system aboard the Axiom - where humans have been existing in a peculiar state of robot-assisted daze for 700 years. EVE comes to realize that WALL-E has inadvertently stumbled upon the key to the planet's future, and is sent back to space to report her findings to the mother ship - to advise that it is safe to return home. Meanwhile, WALL-E chases EVE across the galaxy.



Please note some films will only be available after a certain date – check with your Roadshow representative to confirm. Dates are subject to change.



ROADSHOW PUBLIC PERFORMANCE LICENSING - A division of Roadshow Films Pty Ltd ABN 28 100 746 870
NSW / VIC / TAS / ACT / SA: Level 4, 235 Pyrmont Street, Pyrmont, NSW 2009. GPO Box 2581, Sydney, NSW 2001
Telephone: +61 2 9552 8600 Fax: +61 2 9566 0105
QLD / NT: Unit 2/8 Machinery St, Darra, QLD 4076. PO Box 3067, Darra, QLD 4076
Telephone: +61 7 3375 7472 Facsimile: +61 7 3713 7014
WA: Artistralia P/L, 155 Claisebrook Rd, East Perth, WA 6004
Telephone: +61 8 9227 1571 Fax: +61 8 9227 1577